

SİNPAŞ FİNANS ŞEHİR

Finans Şehir Project is designed as a small city privileged with its location near the new international financial center (İSTANBUL finans merkezi) in ATAŞEHİR which is one of the most dynamic zones of the asian side of İSTANBUL.



15 TEMMUZ
ŞEHİTLER KÖPRÜSÜ
11 KM

FSM KÖPRÜSÜ
15 KM

01-02 BAĞLANTI YOLU

İSTANBUL
FİNANS MERKEZİ

E5 KARAYOLU
7 KM

02 BAĞLANTI YOLU

TEM OTOYOLU
4 KM

SİNPAŞ
TIME
FİNANS ŞEHİR

ŞEHİR PARKI

PARK

TIME

PALAS

METRO
İSTASYONU





YENİ İSTANBUL HAVALİMANI

KUZAY MARMARA OTOYOLU

YAVUZ SULTAN SELİM KÖPRÜSÜ

TEM OTOYOLU

FSM KÖPRÜSÜ

15 TEMMUZ ŞEHİTLER KÖPRÜSÜ

ES OTOYOLU

ATATÜRK HAVALİMANI

SİNEPAŞ TIME

SABİHA GÖKÇEN HAVALİMANI



YAVUZ SULTAN SELİM KÖPRÜSÜ

MASLAK

FSM KÖPRÜSÜ

KUZAY MARMARA OTOYOLU

LEVENT

15 TEMMUZ ŞEHİTLER KÖPRÜSÜ

ÜMRANİYE

KUZAY MARMARA BAĞLANTI YOLU

ÜSKÜDAR

ÇAMLIÇA BAĞLANTI YOLU

SINPAŞ TIME
FİNANS MERKEZİ

TEM OTOYOLU

KADIKÖY

ATAŞEHİR

GÖZTEPE - ATAŞEHİR - ÜMRANİYE METRO HATTI

ES OTOYOLU



Easy to access and Impossible to Give Up



E-5
7 km



The 15th of July
Martry's Bridge
11 km



TEM
Highway
4 km

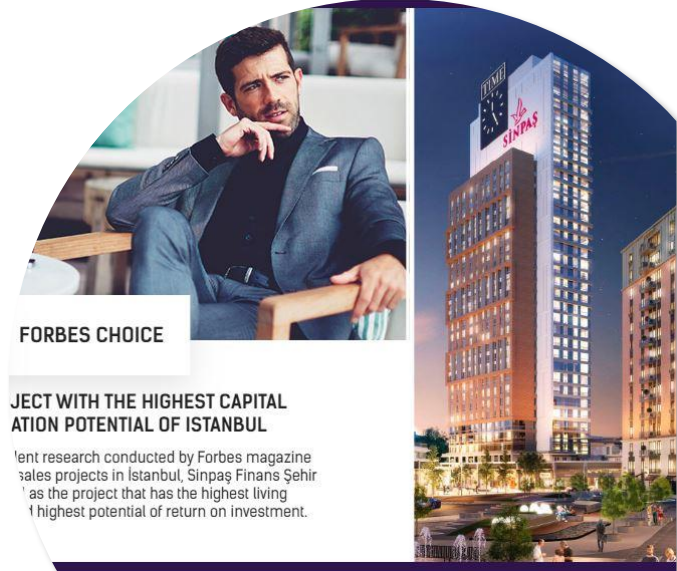
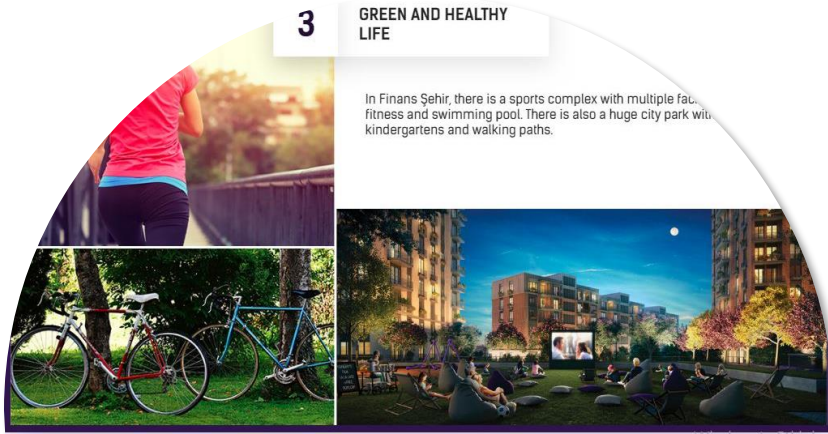


FSM
Bridge
15 km



Sabiha Gökçen
Airport
27 km

6 REASONS TO BE IN SİNPAŞ FİNANS ŞEHİR





1

FORBES CHOICE

THE PROJECT WITH THE HIGHEST CAPITAL APPRECIATION POTENTIAL OF ISTANBUL

In independent research conducted by Forbes magazine on ongoing sales projects in İstanbul, Sinpaş Finans Şehir was selected as the project that has the highest living standards and highest potential of return on investment.





2

EXCLUSIVE BRANDS IN YOUR NEIGHBOURHOOD

Everything one needs is within walking distance in Finance Avenue, from Cafes to restaurants, flowers to bookstores, open air cinema to brand name stores. You will enjoy life in Istanbul's new financial district.



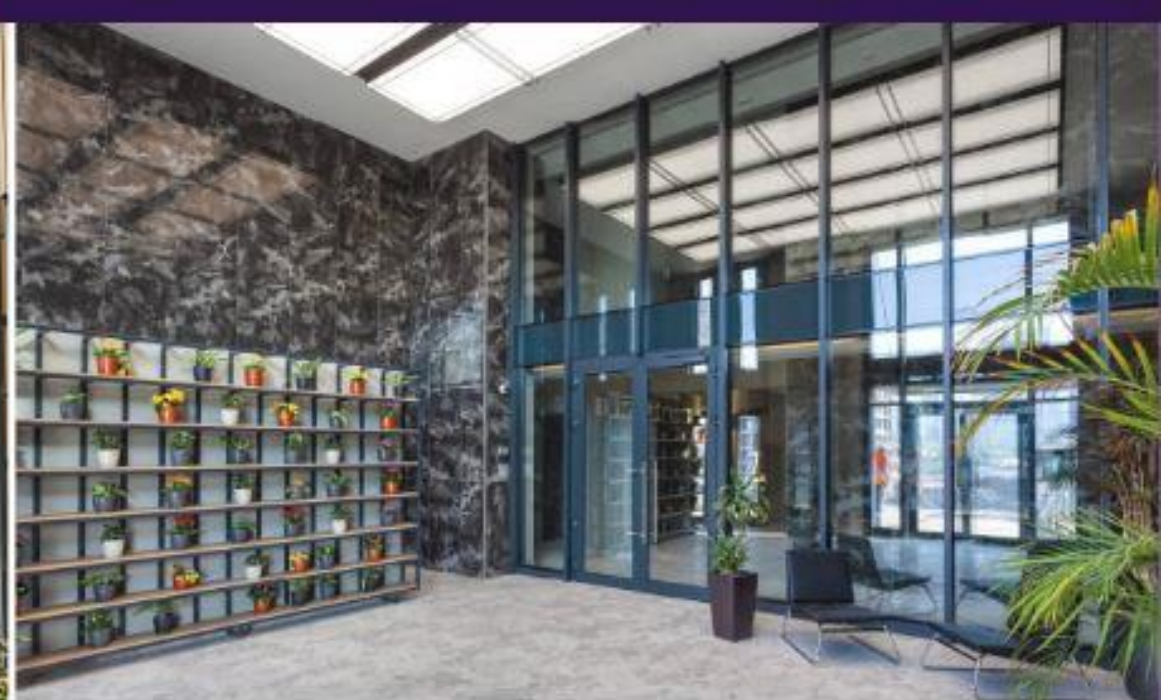


3

GREEN AND HEALTHY LIFE

In Finans Şehir, there is a sports complex with multiple facilities such as fitness and swimming pool. There is also a huge city park with conceptual kindergartens and walking paths.





4

A FIRST TIME IN REAL ESTATE : SAMPLE DISTRICT RATHER THAN SAMPLE APARTMENT

Sinpaş Finans Şehir launched a sample neighbourhood rather than sample apartments which is a unique first in the Turkish real estate sector. The project will provide you with a privileged lifestyle that consists of features such as low-storey buildings with genuine brick façade, a huge city park, conceptual kindergarden named Parky, large green fields and shopping avenue with exclusive boutique shops.

Sinpaş Finans Şehir is located adjacent to the international financial centre of İstanbul, as well as the major connection highways of two bosphorus bridges. It's sheer size ensure Finans Şehir will have two metro stations to choose from.



5

SPACIOUS BALCONIES

Enjoy the colors of spring, the warmth of the summer and the Winter scenery - enjoy the captivating scenery against the backdrop of the building's genuine brick façade.

KEEP IN TOUCH WITH THE CITY

Homes with spacious balconies blends your private space with nature, ensuring naturally airy interiors.

ADD VALUE TO YOUR HOME

The balcony can be a major reason for people to prefer a house, adding rare value to your home in the resale market place.



6

GOURMET DELICACIES

Your gastronomic garden within the city will provide you with a healthy and natural environment for fruit and vegetable cultivation

SINPAŞ TIME

DELIVERY TIME : DECEMBER 2021





SINPAŞ TIME



SINPAŞ TIME



SINPAŞ TIME VILLA



SINPAŞ TIME

SINPAŞ PARK

DELIVERY TIME : JUNE 2020

TITLE DEEDS WILL BE READY IN : JANUARY ; 2020





SINPAŞ PARK



Ashley Jordan
Santana
All rights reserved. No part of this publication may be reproduced, stored in a retrieval system, or transmitted in any form or by any means, electronic, mechanical, photocopying, recording, or by any information storage and retrieval system, without the prior written permission of the publisher.
CASA
CASA
CASA

SINPAŞ PARK



SINPAŞ PARK



NIGHT'S
FILM:
A LA LOND
->FREE
POPCORN

SINPAŞ PARK

SINPAŞ PARK





FINANŞ
ŞEHİR
KÜTÜPHANESİ

SINPAŞ PARK

SİNPAŞ PALAS

READY TO MOVE IN
TITLE DEEDS ARE READY





SİNPAŞ PALAS



SINPAŞ PALAS

SİNPAŞ PALAS





SINPAŞ PALAS



SINPAŞ PALAS